

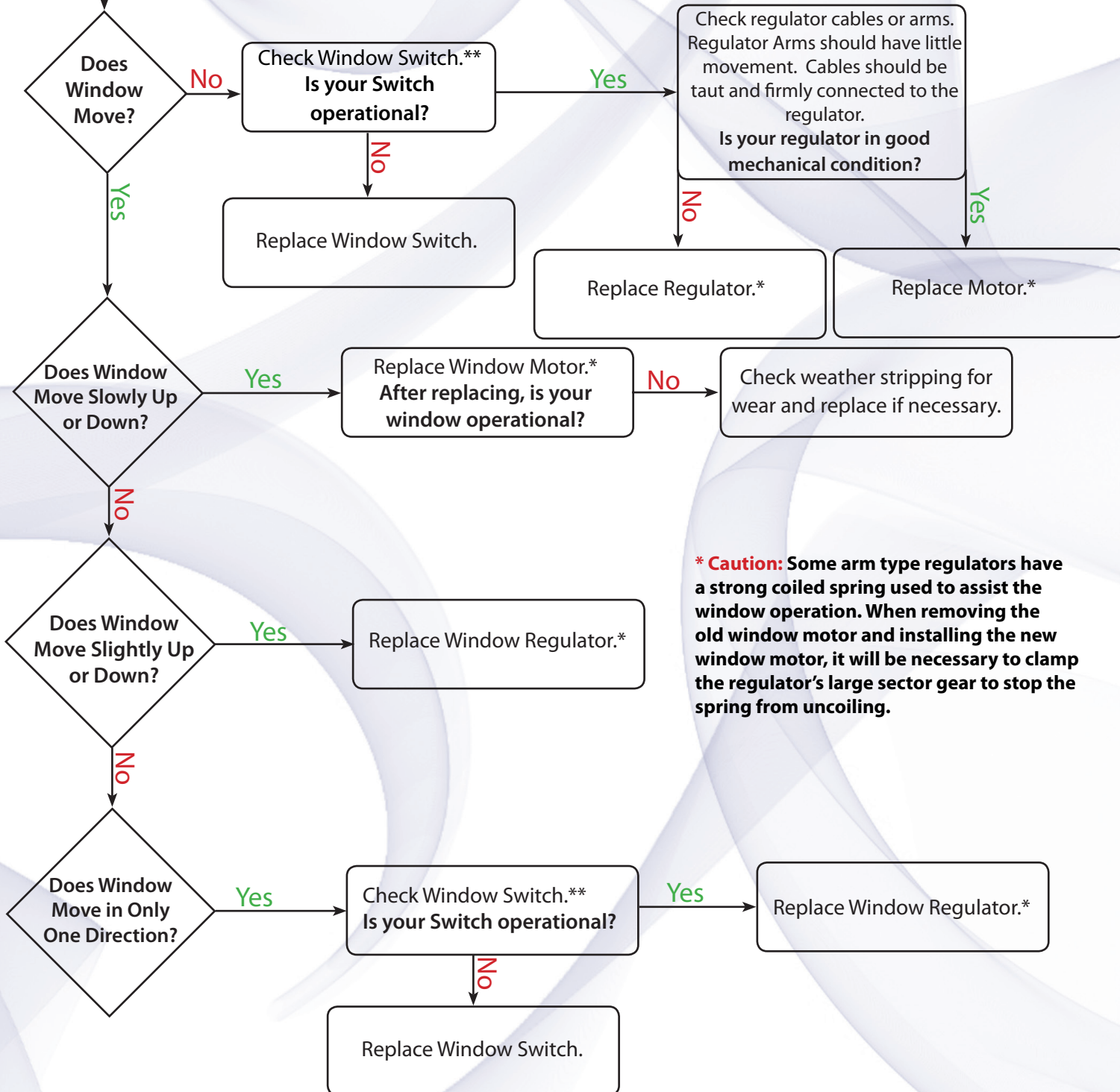
# Power Window Diagnostic Flow Chart



Power Window  
Not Operating  
Properly

Turn Ignition  
Switch On.

**\*\* Note:** An easy check is to watch your interior lighting when the switch is operated. If the interior lights dim slightly in both directions, your switch is OK. You can also put a test light across the window motor terminals. The test light should light in the up and down positions only. Also check for any frayed or loose wires and repair if necessary.



**\* Caution:** Some arm type regulators have a strong coiled spring used to assist the window operation. When removing the old window motor and installing the new window motor, it will be necessary to clamp the regulator's large sector gear to stop the spring from uncoiling.

